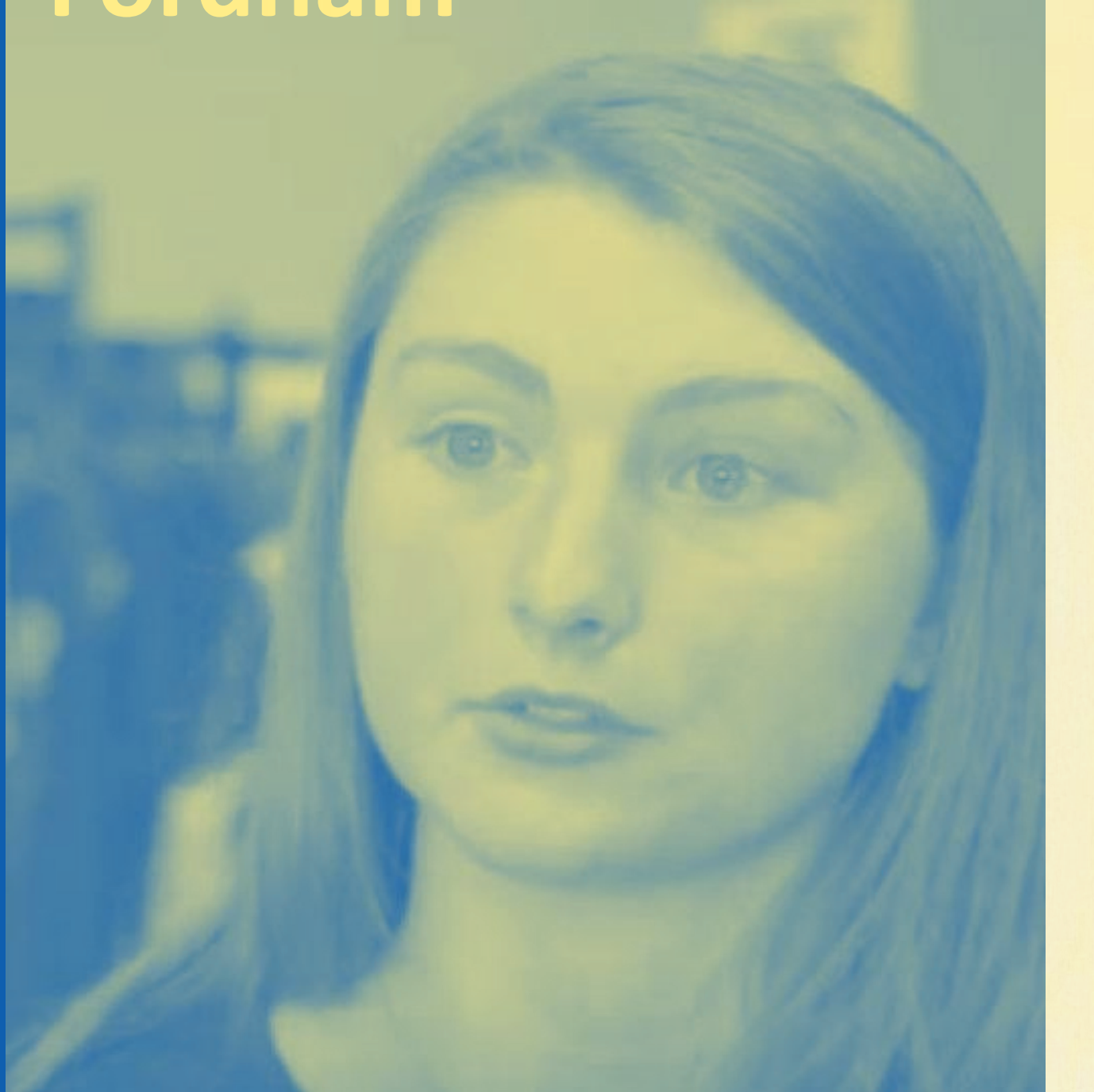


Real World Learning Initiatives

2019-2020

**Shelby
Fordham**



“

**I’ve learned more in these
past two years than I think
I’ve learned in the entire
10 years prior.**

”

“

Jade



**The people you interact
with on your team will help
expand your knowledge and
grow your professional
development skills.**

”

**Anthony
Glover**



“

**When I joined B.F.I., it
allowed me to become
more successful and more
focused on my goals in life.**

”

**Victoria Magri &
Samantha Bixby**



“

**It's better whenever it's
hands-on too.**

**You did that. You put your
time and effort into fixing it
or building it.**

”

What **experiences** Kansas City high school graduates need to be ready for the future



work experiences



industry-recognized
credentials

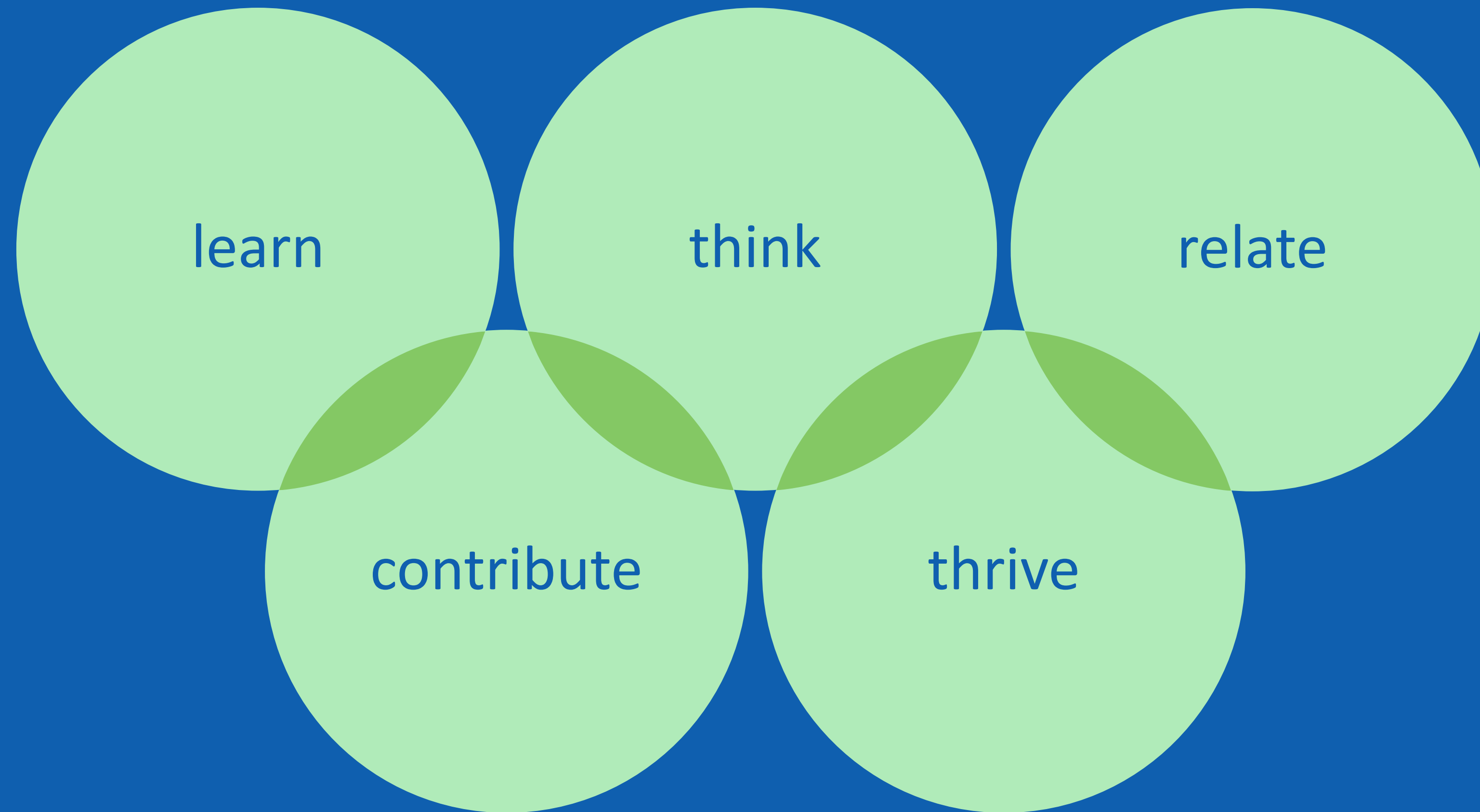


college credit



entrepreneurial
experiences

What **skills** Kansas City high school graduates need to be ready for the future



Multiple pathways are essential

65%

of all jobs require a
postsecondary credential

35%

of those require a
4-year degree

Kansas

69%

of high school graduates enroll
in college

45%

complete at least
one year

Missouri

51%

of high school graduates enroll
in college

35%

complete at least
one year

Earning Market Value
Assets in high school
should be an option for
all students.

- Internships
- Client-connected projects
- industry-recognized credentials
- dual-college credit
- entrepreneurial experiences

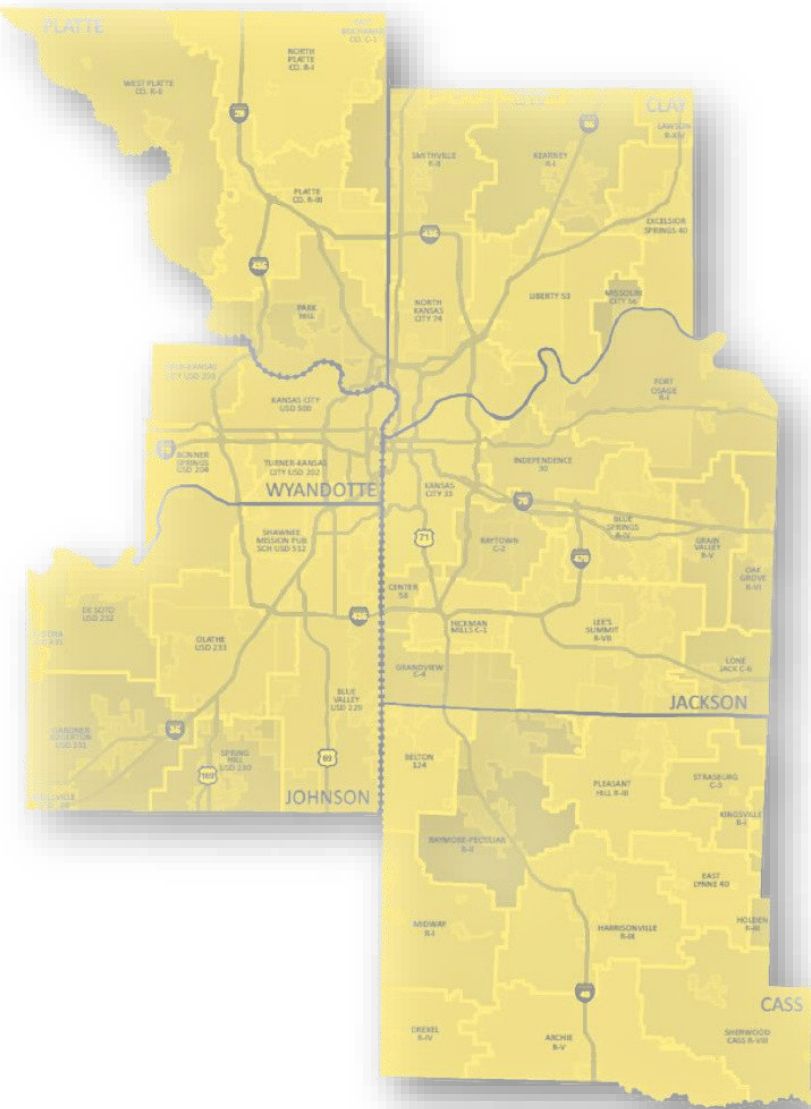
Real World Learning Initiatives

Connecting how and what students learn in school to education, work, and life outside of school

Post-secondary

SkilledKC
TECHNICAL INSTITUTE

High School



B2E



High school diploma plus Market Value Assets

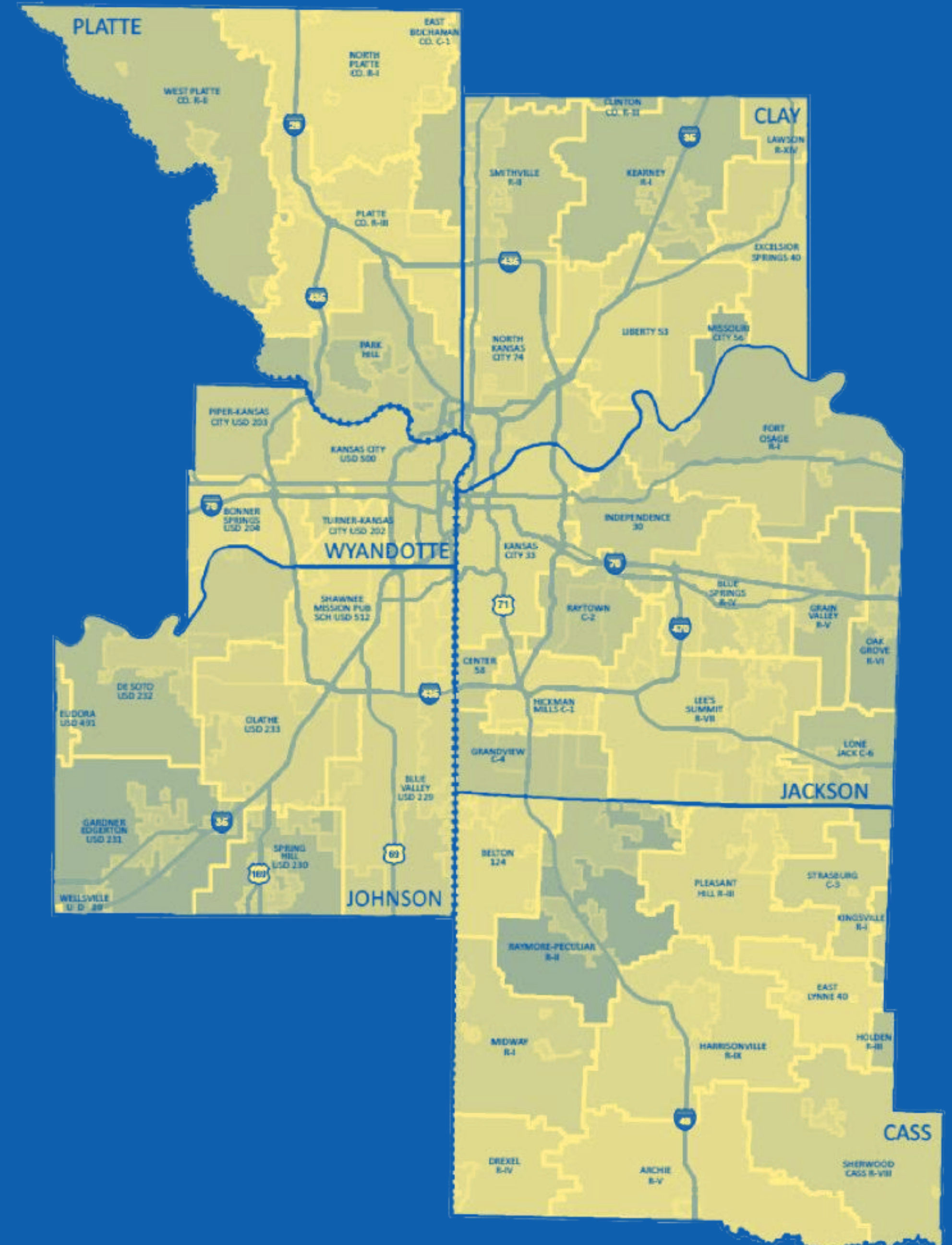
School Districts in Greater Kansas City

DESIGN + PLAN GRANTS

2019-2020 Cohort 1

Belton
Center
Fort Osage
Grandview
Hickman Mills
Hogan/DeLaSalle
Independence
Kearney

Lee's Summit
Liberty
NKC
KCPS
Olathe
Ray-Pec
Shawnee Mission



Big, Audacious Goals

By May 2020, all 15 Design + Plan Teams will present their 3-year strategic plan to dramatically increase the number of students leaving high school with one or more Market Value Assets.

By 2030, all KC Metro high school students will graduate with one or more Market Value Assets.

Regionally-recognized **Market Value Assets** (MVAs)



work experiences



industry-recognized
credentials



college credit



entrepreneurial
experiences

MVA Guiding Principles

- Work output has **recognized value** within industry or postsecondary.
- Student performance is evaluated by **multiple stakeholders**, some external to education.
- The student grows capabilities in **multiple 'KC Portrait of a Graduate' dimensions**.
- The process of earning the MVA adds to the student's **social capital**.

Parallel investment strategies

For districts

- Year 1 – design/planning grant
- Year 2 – pilot grant
- Year 3 – full implementation grant
- Year 4 – full implementation grant

For the region

- Pathfinding + awareness campaign
- Business + education connection hub (B2E)
- Data, policy and practice research and learning hub

B2E: Business + education connection hub

Explore



Job shadow – engage with students 1:1 or in small groups to show what a ‘day in the life’ of a job or industry involves.

Engage



Projects – Provide authentic projects for students to complete, with coaching from industry professionals along the way.

Immerse



Internships - Provide student internships, co-ops or pre-apprenticeships (paid or unpaid) requiring students to perform real work activities under the supervision of professionals.

B2E Components

Trusted Data Exchange

Students & MVAs

Employer Opportunities
and Skill Profiles

Pathways

Experience Metrics

Resources & Support

Common Language

Playbooks & Toolkits

Student Readiness
Assessment

Consulting

RWL Network

School B2E Reps

Intermediaries

Civic/Chamber Reps

Aligning the Broader RWL Learning Ecosystem



- Many assets, but fragmented...
- Students need way-finding help
- Empowered educators and administrators can have big impact
- Employer participation is vital; requires expert brokering

For Discussion

- How can your work support employers, students, and/or schools in bringing Real World Learning and Market Value Assets to scale in KC?
- What will it take to make our region a world-leading, **Real World Learning Community**?

Thank You